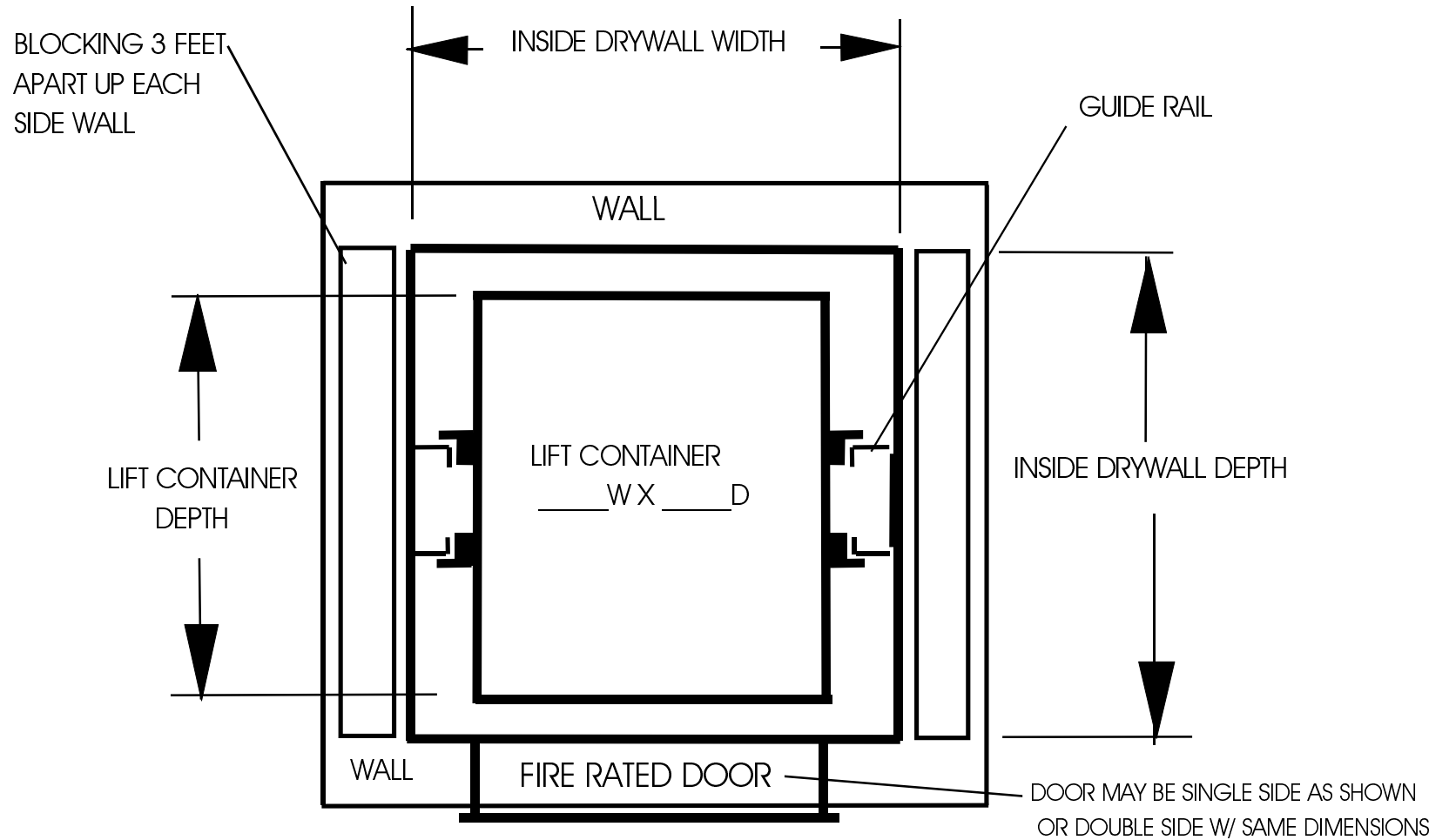


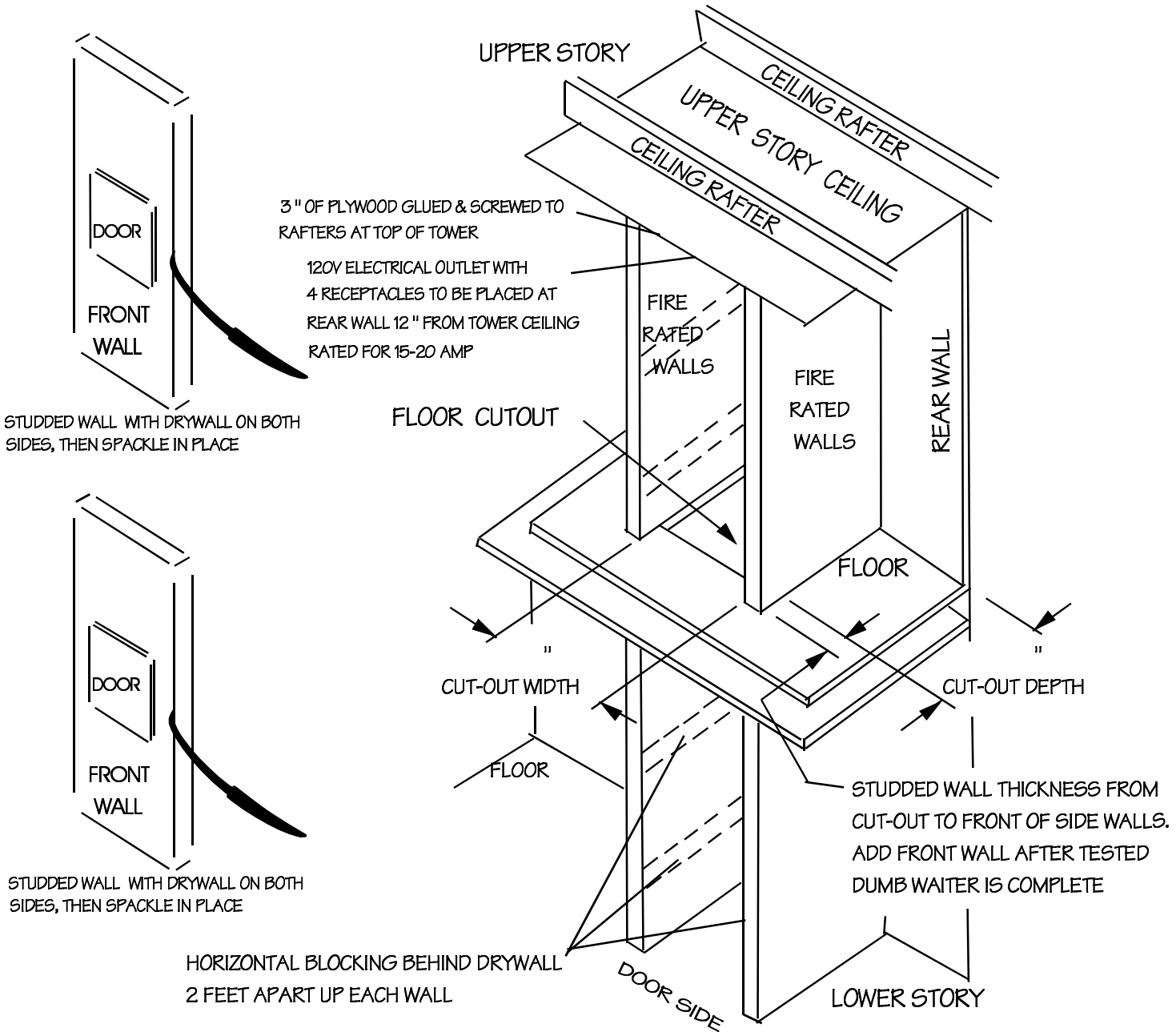
# SITE PREPARATION FOR COMMERCIAL STANDARD 'FR' LIFT W/ SIDE GUIDES



LIFT TYPE / SIZE W X D	INSIDE DRYWALL WIDTH	INSIDE DRYWALL DEPTH
FR 20 X 20	26"	23"
FR 24 X 24	30"	27"
FR 24 X 30	30"	33"
FR 30 X 30	36"	33"



**SITE PREPARATION FOR COMMERCIAL STANDARD "FR" LIFT W/ SIDE GUIDES**



FLOOR CUT-OUT AND TOWER WALL LAYOUT TO CONSTRUCT TYPE "FR" LIFT TOWER

Lift type / size	Cut-out width	Cut-out depth
FR 20 X 20 / 20" x 20" x 24"	26"	23"
FR 24 X 24 / 24" x 24" x 24"	30"	27"
FR 24 X 30 / 24" x 30" x 24"	30"	33"
FR 30 X 30 / 30" x 30" x 30"	36"	33"

**ALLOW 6" TO WIDTH AND 3" TO DEPTH BEYOND DESIRED CONTAINER SIZE**

CUSTOMER TO CONSTRUCT CUT-OUT WALLS AND MIN. 3" OF PLYWOOD TO TOWER CEILING AS SHOWN BEFORE DRYWALL. INSIDE TOWER DRYWALL DIMENSIONS SHOWN ARE INSIDE FINISHED DRY WALL SURFACE. BUTLER'S BUDDY LIFT TO BE INSTALLED AND TESTED BEFORE LAST FRONT WALL IS SET IN PLACE. DOORS LOCATED AT FRONT OR FRONT AND BACK.