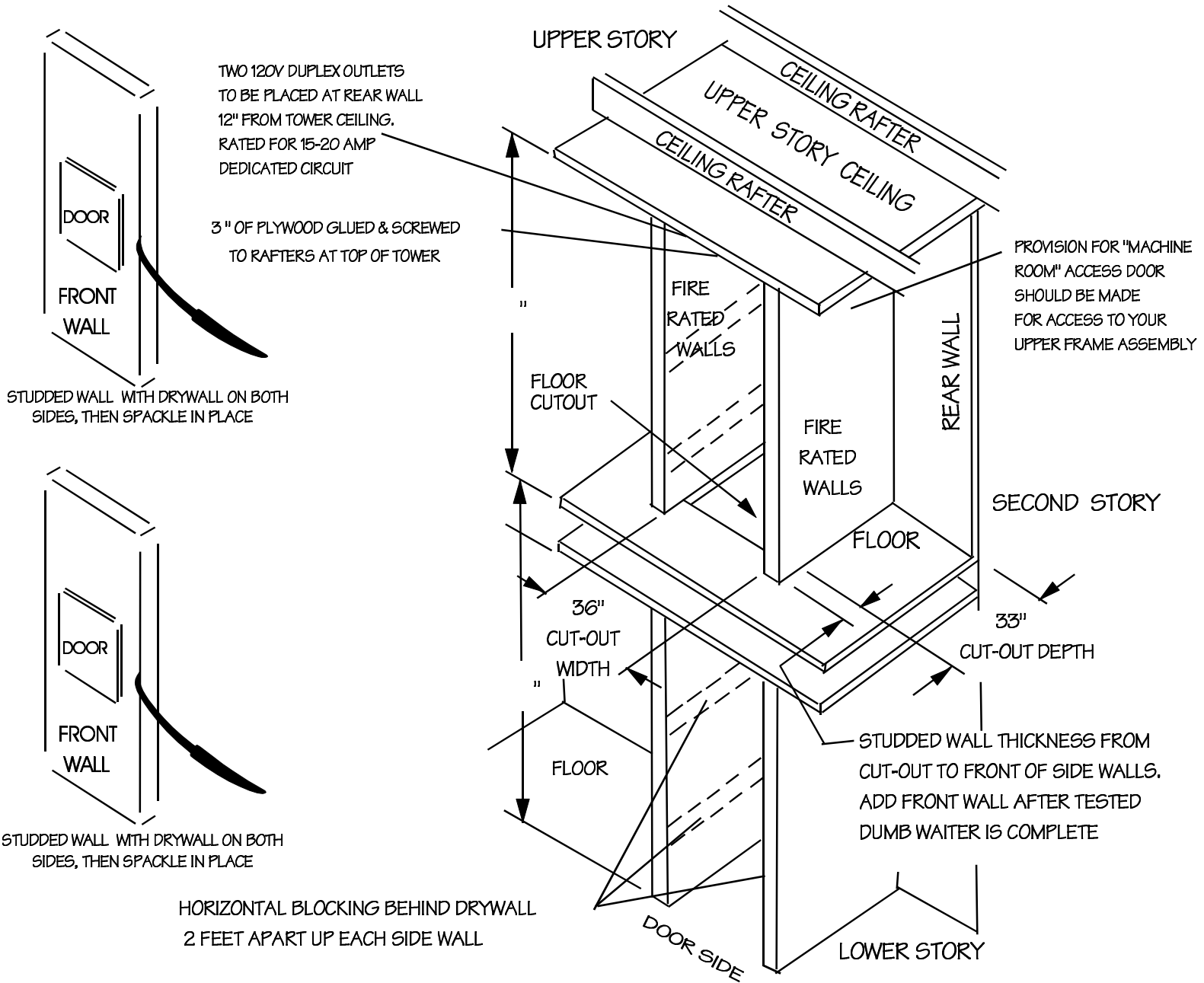


SITE PREPARATION FOR STANDARD LIFT W/ DOUBLE SIDE GUIDES



Lift type / size	Cut-out width	Cut-out depth
Standard lift 30'w x 30'd x 30'h	36"	33"

ALLOW 6" TO WIDTH AND 3" TO DEPTH BEYOND DESIRED CONTAINER SIZE

CUSTOMER TO CONSTRUCT CUT-OUT WALLS AND MIN. 3" OF PLYWOOD TO TOWER CEILING AS SHOWN BEFORE DRYWALL. INSIDE TOWER DRYWALL DIMENSIONS SHOWN ARE INSIDE FINISHED DRY WALL SURFACE. BUTLER'S BUDDY LIFT TO BE INSTALLED AND TESTED BEFORE LAST FRONT WALL IS SET IN PLACE. DOORS LOCATED AT FRONT OR FRONT AND BACK

2 STOP CONSTRUCTION PREPARATION DETAILS